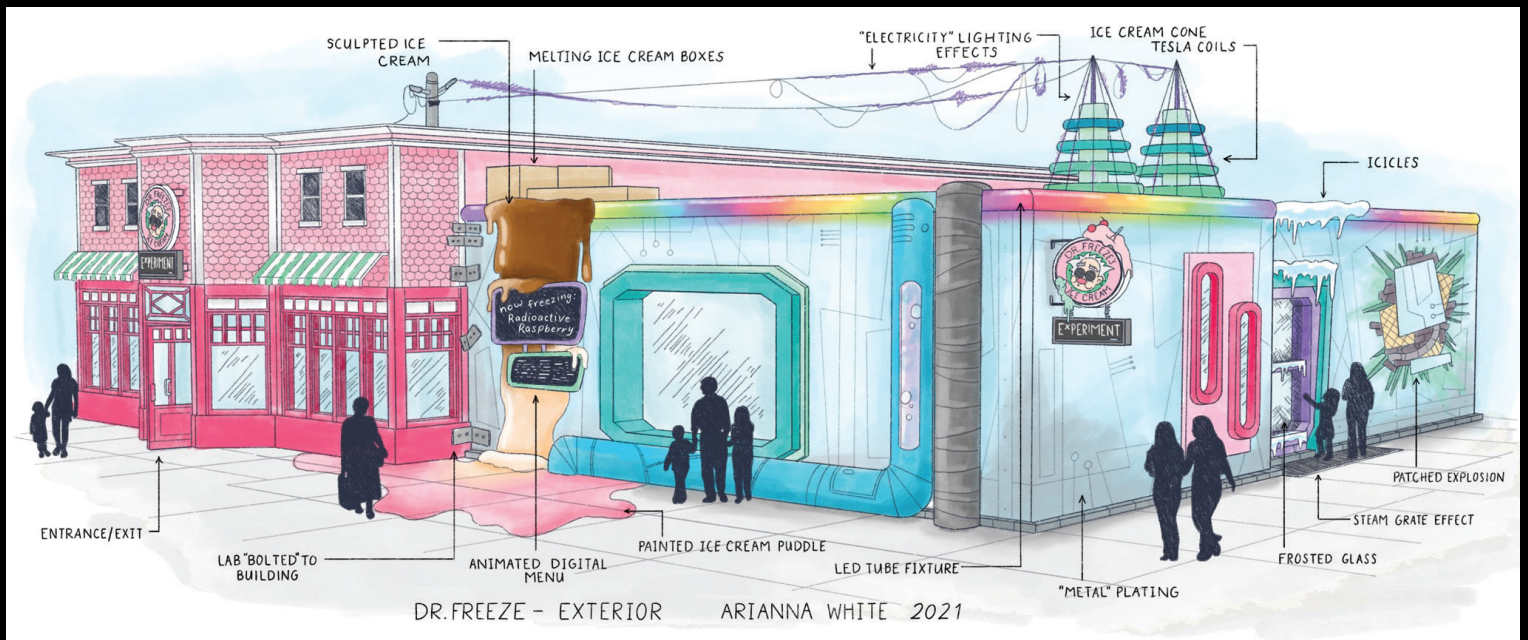


# Arianna White

---

*Design Portfolio*  
2023

*Contents:*  
*Themed Entertainment Design*  
*Universal Creative Projects*  
*Theatre and Scenic Design*



Exterior Concept Rendering (over SketchUp Model)

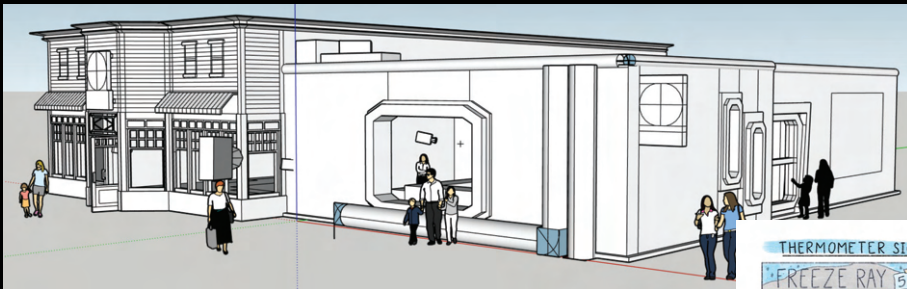
Small Project Studio - UCF MFA

# Dr. Freeze's Ice Cream Experiment

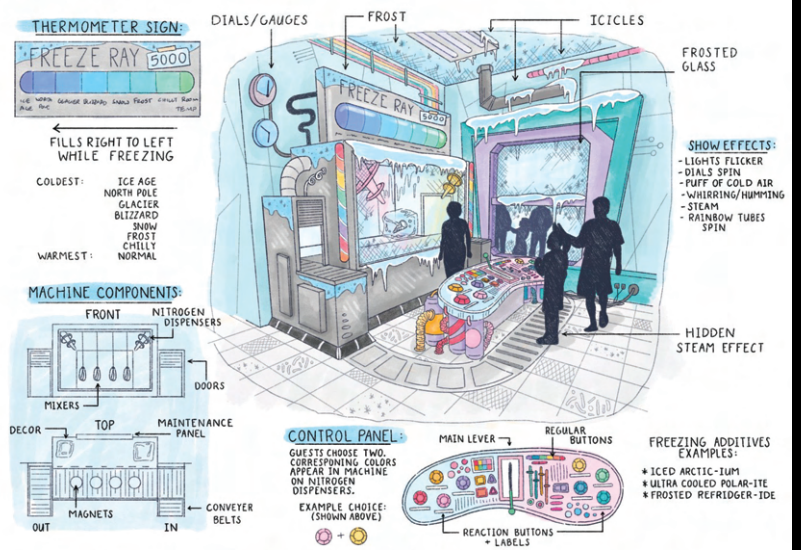
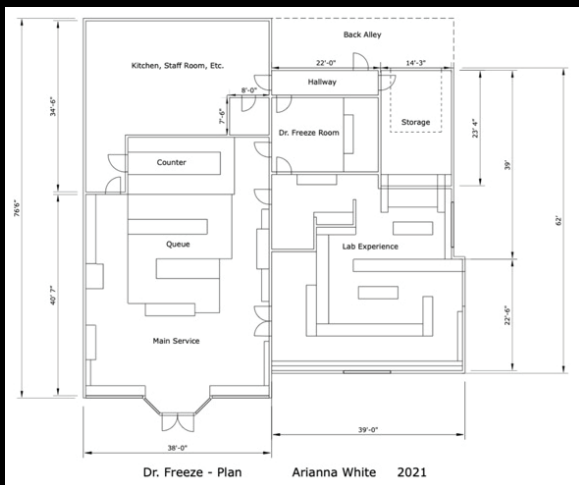
A make your own ice cream experience and counter service using nitrogen to "flash freeze" ice cream in an outdoor shopping center. Join the wacky Dr. Freeze by donning goggles and lab coats and create your very own sweet, silly and icy desserts in just 15 minutes using his patented freezing technology!

## Project Contents

- Concept Illustrations
- SketchUp
- Concept Research
- Show Writing
- Cost and Operations Analysis



Initial SketchUp Model (Left), Station 4 Rendering (Bottom Right), Project Plan Building Layout (Bottom Left)



DR. FREEZE - STATION 4 (FREEZE RAY) ARIANNA WHITE 2021





## Project Contents

- Concept Illustrations
- Storyboards
- Character Design
- Show Set Exploration



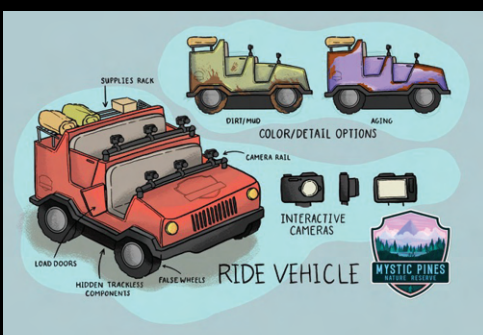
An indoor explorable campground experience and attraction with mysterious cryptids for sleuths of all ages.



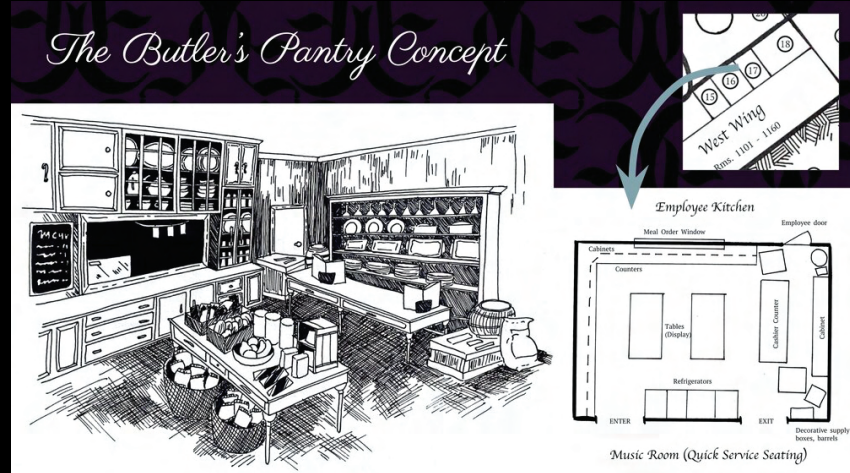
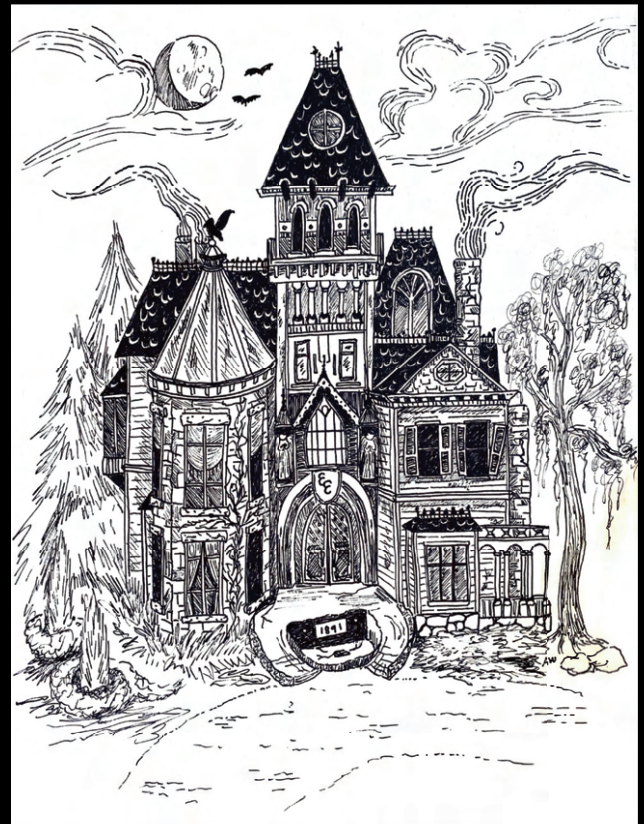
Collaborative Project Studio - UCF MFA

# Mystic Pines

Group Project Role: Art Director







Presentation slides (left) and Exterior Illustration (Upper Right)

The Eerie Estate, once shrouded in secrecy by the wealthy and bizarre Eerie family, opens its doors to Guests, inviting them to not only spend the night in gothic luxury, but also discover a world full of family-friendly spooky stories, kooky encounters and haunted hijinks. An upgrade to the resort industry, the Eerie Estate immerses families into a Victorian-inspired world where they are the master detectives, uncovering mysteries and riddles around every corner in addition to providing a luxurious hotel experience.

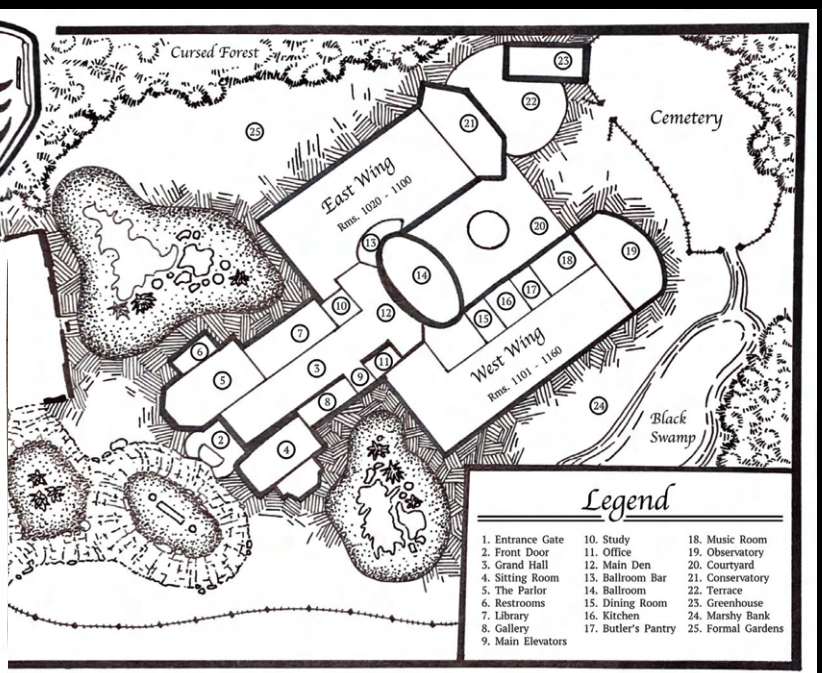
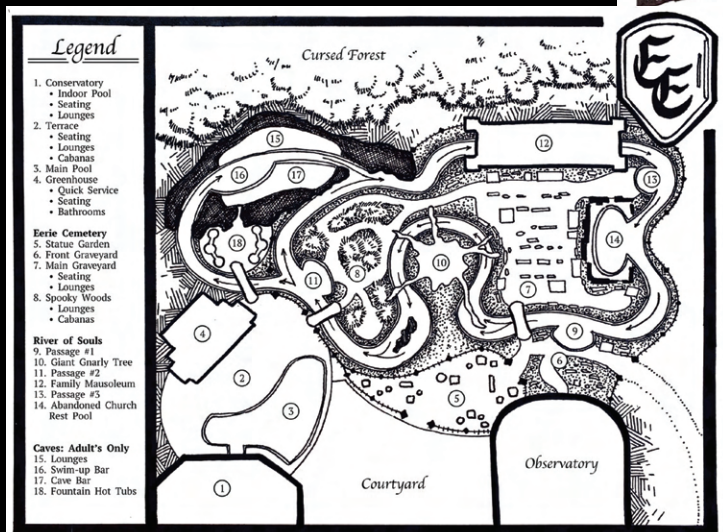
TEA@UCF Summer 2021: First Place Winner

# Eerie Estate

Collaborative Project

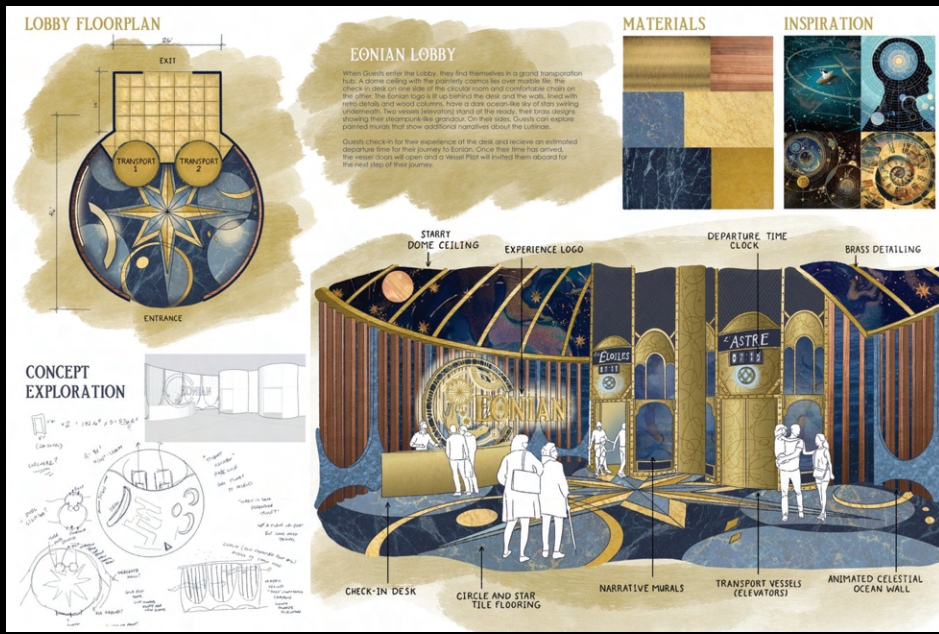
## Project Contents

- Concept Illustrations
- Concept Research
- Show Writing
- Ideation and Presentation Pitching



Concept Layouts





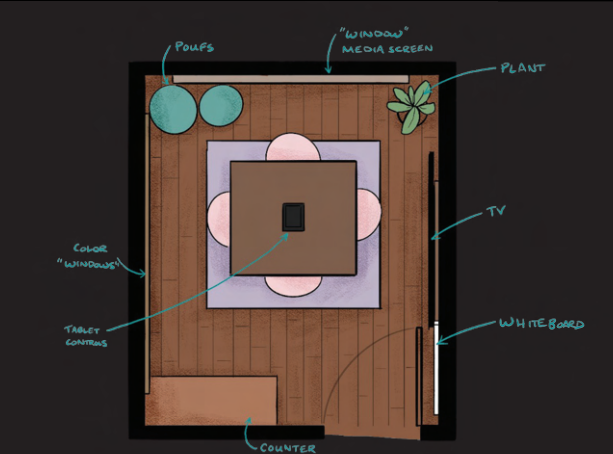
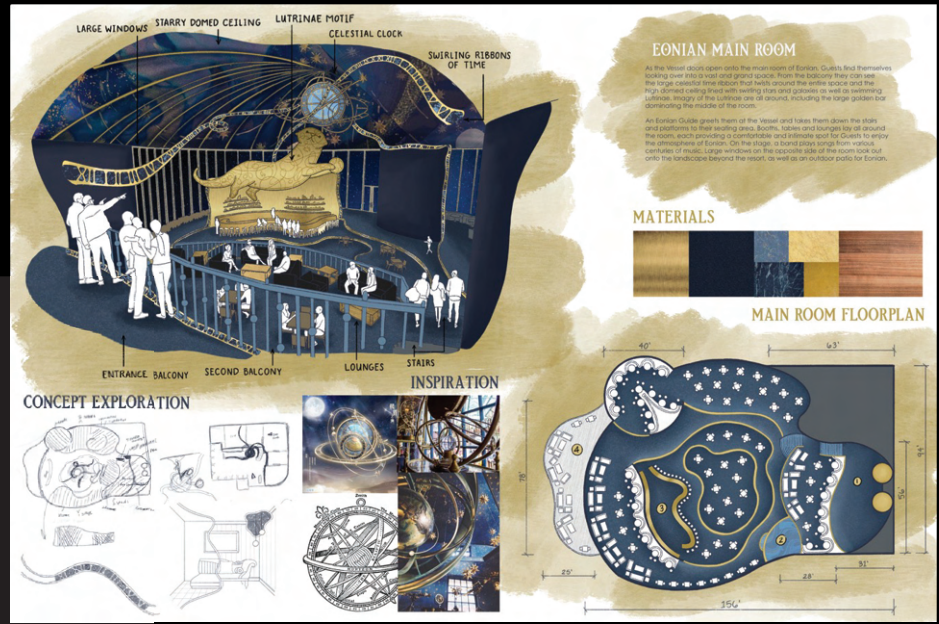
# Immersive Experience Studio - UCF MFA

## Eonian - Celestial Lounge

### Project Contents

- Concept Illustrations
- SketchUp
- Concept Research
- Show Writing
- Facility Analysis

Presentation Boards with Layouts, Inspiration, Materials, Show Writing and Concept Illustrations



Concept Illustrations with Potential Control Mockups

## Theatre Practicum - UCF MFA

# Campus Study Rooms Renovation

Study in a space that tastes like your first sip of coffee in the morning; the bubbly sip of bobba with friends in the afternoon; or even feels like the late night calmness of bookstore at 2am...

At its base, this study room resembles any ordinary shop, cafe or lounge but can transform into any time or season and then any boba-shop, ramen, bakery, diner, tea-room or setting therein for your study needs in this lo-fi inspired immersive space.





**Themed Retail  
Maya  
2021**



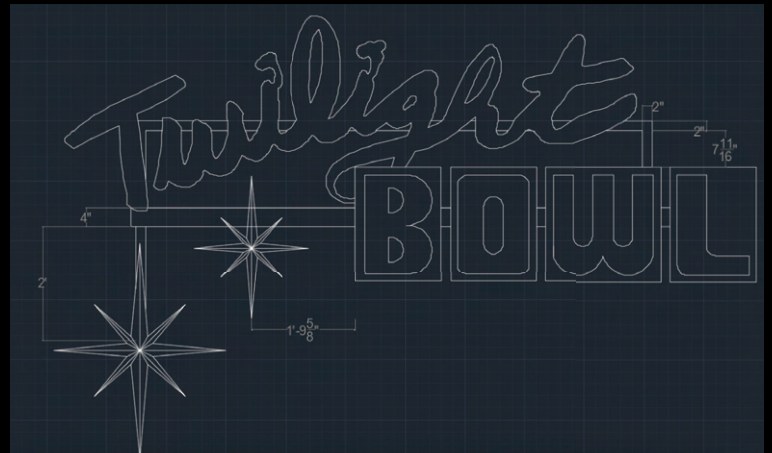
**Interactive Attraction  
Collaborative class with  
Falcon's Creative  
2022**







Initial concept sketch of bowling sign (Procreate)



Final Rendering of bowling sign (AutoCAD)

### Methods

- Drawing + Digital Drawing
- Scenic painting
- AutoCAD
- SketchUp
- Period research
- Set dressing
- Sourcing period objects



Final set with show lighting and neon sign



Sketch and color over rendering (SketchUp)



Set rendering (Sketchup)



## University Theatre's *Twilight Bowl*

by Rebecca Gilman

Director: Jessica Fisch

Scenic Designer: Arianna White

Scenic Charge(s): Grace McGurie  
& Arianna White





Initial drawing of show drop (Procreate)

University Theatre's  
*Into the Woods*

by Stephen Sondheim

Directed by David Ronis and Chad Hutchinson

Scenic Designer: John Drescher

Assistant Scenic Designer: Arianna White

Scenic Charge(s): Emily Rudolph & Arianna White



Performance Photo



Initial concept sketch (Procreate)



Final rendering (Procreate)

**Methods**

- Drawing + Digital Drawing
- Scenic painting
- Environmental research
- Set dressing
- Sourcing period objects



Painted facade



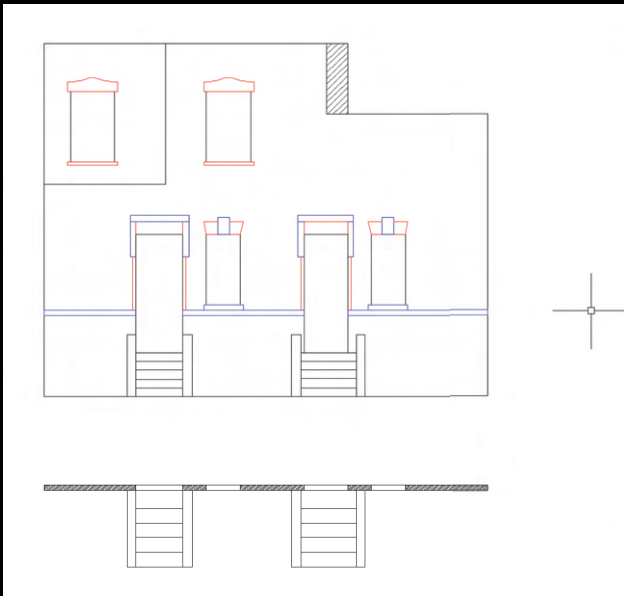
Final Show drop with show lighting





## Additional Theatrical Design

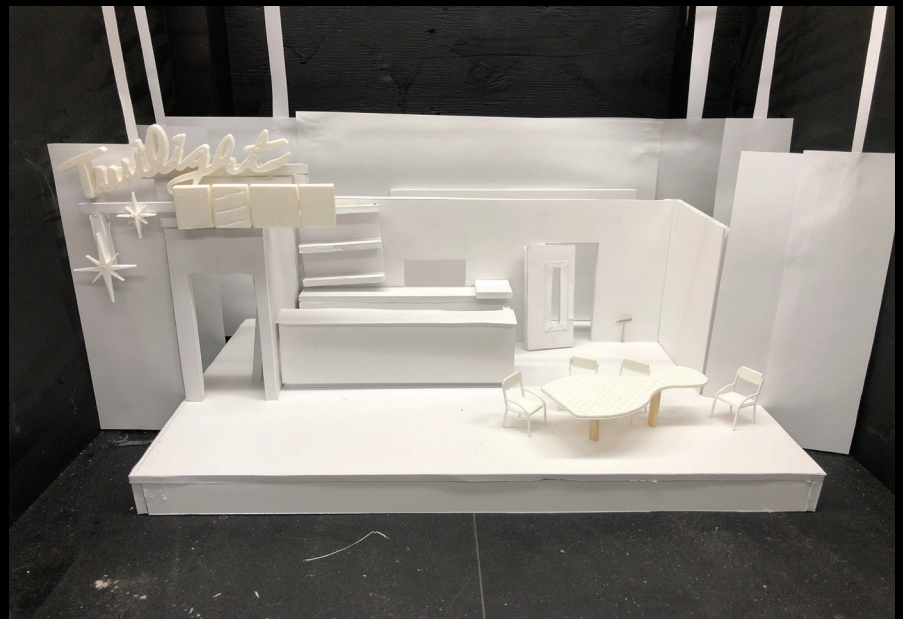
**3D Model for *Evil Dead: The Musical***  
Sharpie on paper, foamboard  
2020



Scenic detail rendering (AutoCAD)  
Little Shop of Horrors



Final scenic detail - Little Shop of Horrors



**3D Model for *Twilight Bowl***  
Paper, foamboard, 3D printing  
2019





**Architectural Study**  
**Sharpie on paper**  
**18" x 24"**  
**2021**



Additional Portfolio Materials Provided Upon Request from:

# Universal Creative

## Methods and Experience

- Drawing + Digital Drawing
- SketchUp
- Design Packages
- Themed Finishes
- AutoCAD
- Concept Research
- Photoshop



